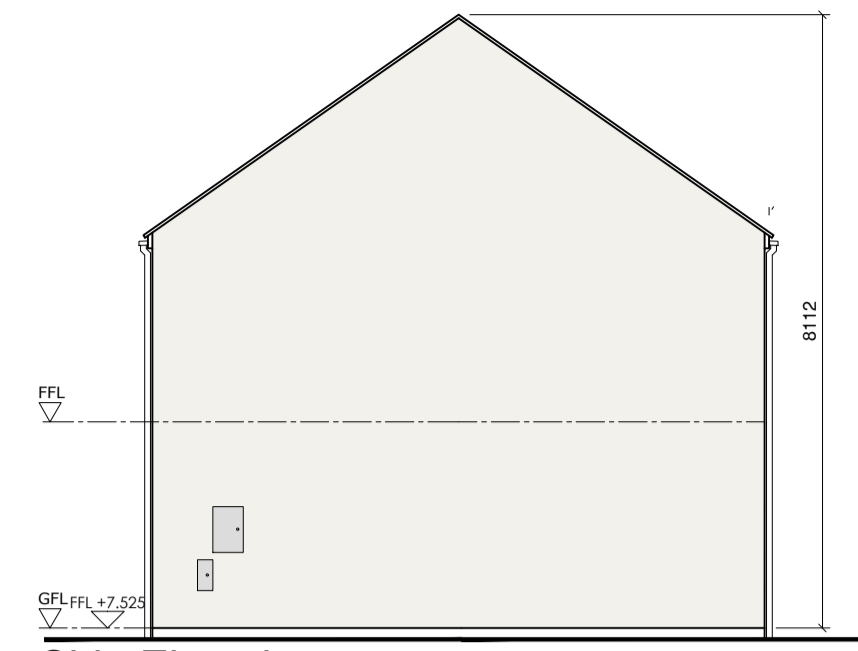




Front Elevation A



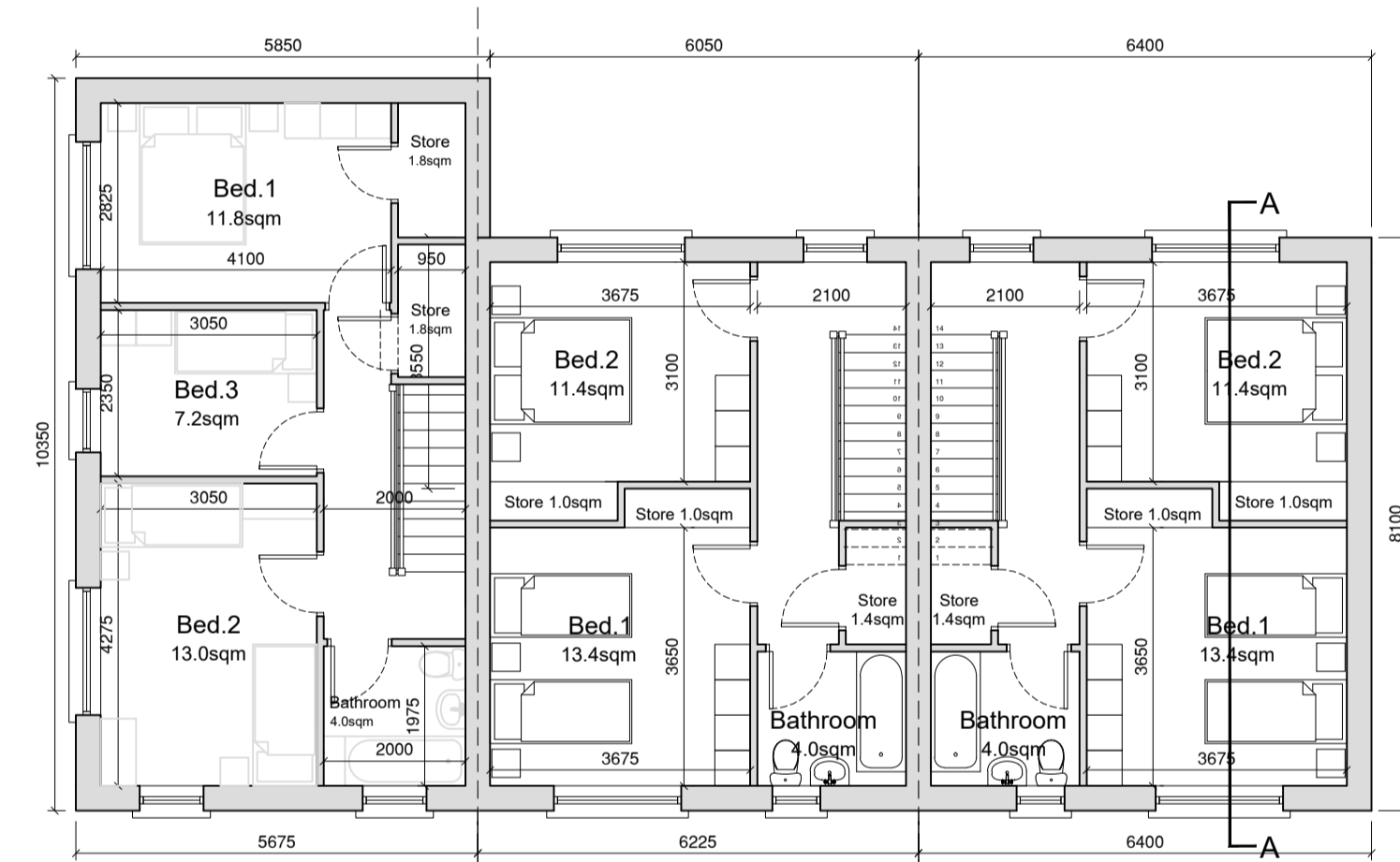
Side Elevation



Rear Elevation



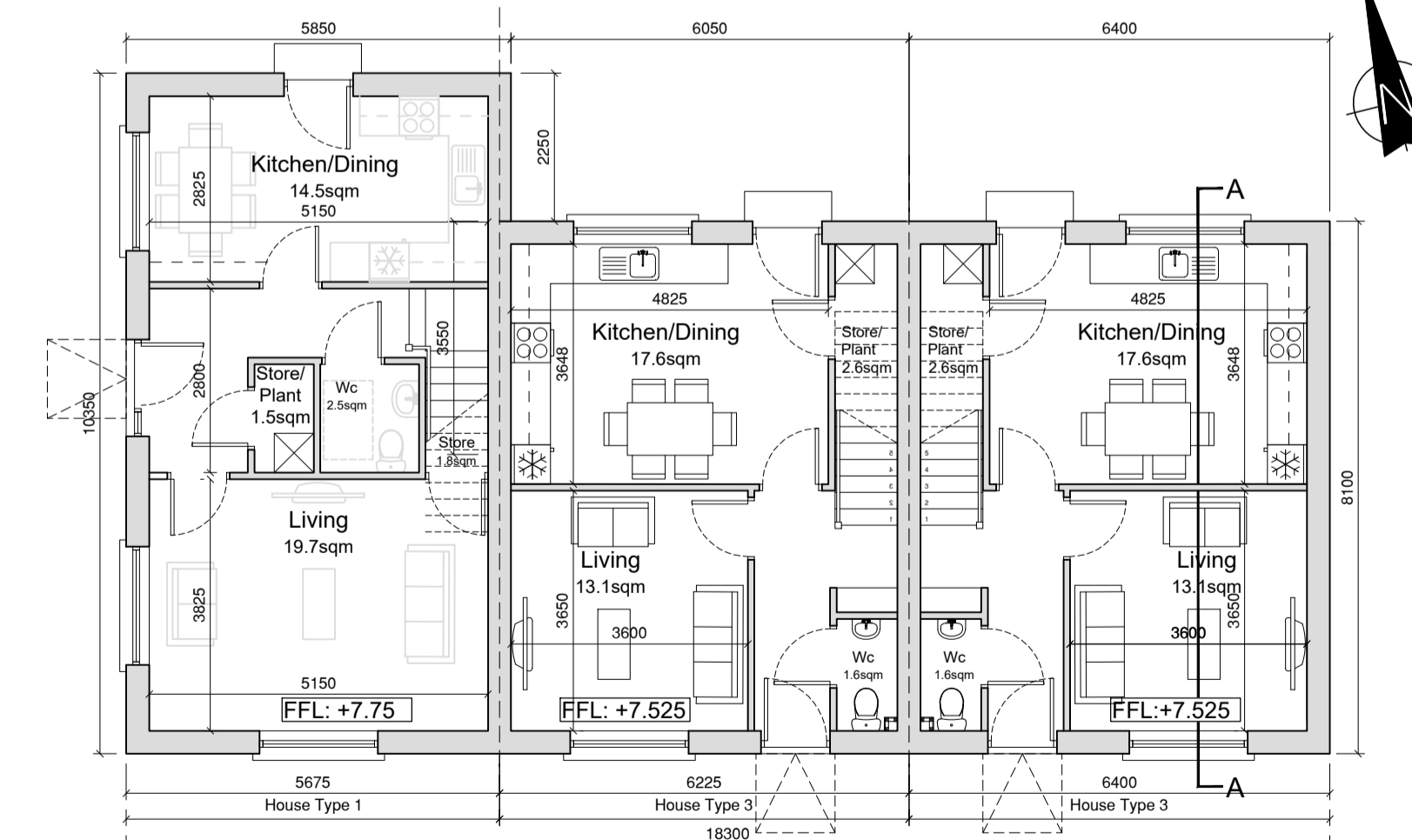
Front Elevation B



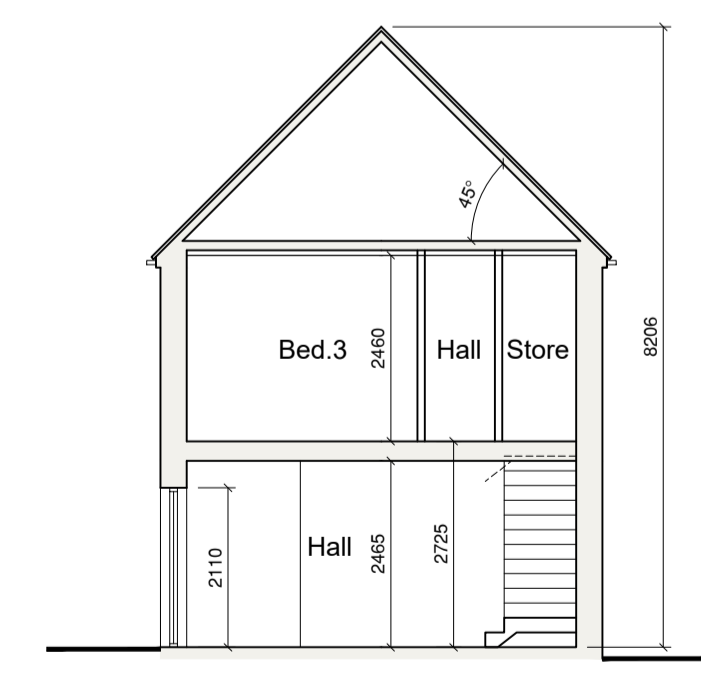
First Floor Plan



Section A-A



Ground Floor Plan



Section B-B

House Type 1

Quality Housing for Sustainable Communities Standards

3 Bedroom / 5 Person House (2 Storey) Areas:

| | Target Gross Floor Areas (m ²) | Min-Main Living Room (m ²) | Aggregate Living Area (m ²) | Aggregate Bedroom Area (m ²) | Storage (m ²) |
|----------|--|--|---|--|---------------------------|
| Required | 92 sqm | 13 sqm | 34 sqm | 32 sqm | 5 sqm |
| Provided | 99.4sqm | 19.7 sqm | 34.2sqm | 32 sqm | 6.9 sqm |

3 Bedroom / 5 Person (2 Storey) Widths:

| | Single Bedroom (m) | Double Bedroom (m) | Living Rm [1 Bed] (m) | Living Rm [2 Bed] (m) | Living Rm [3 Bed] (m) |
|----------|--------------------|--------------------|-----------------------|-----------------------|-----------------------|
| Required | 2.1m | 2.8m | 3.3m | 3.6m | 3.8m |
| Provided | 2.35 m | 2.85 m | - | - | 3.825 m |

House Type 3

Quality Housing for Sustainable Communities Standards

2 Bedroom / 4 Person House (2 Storey) Areas:

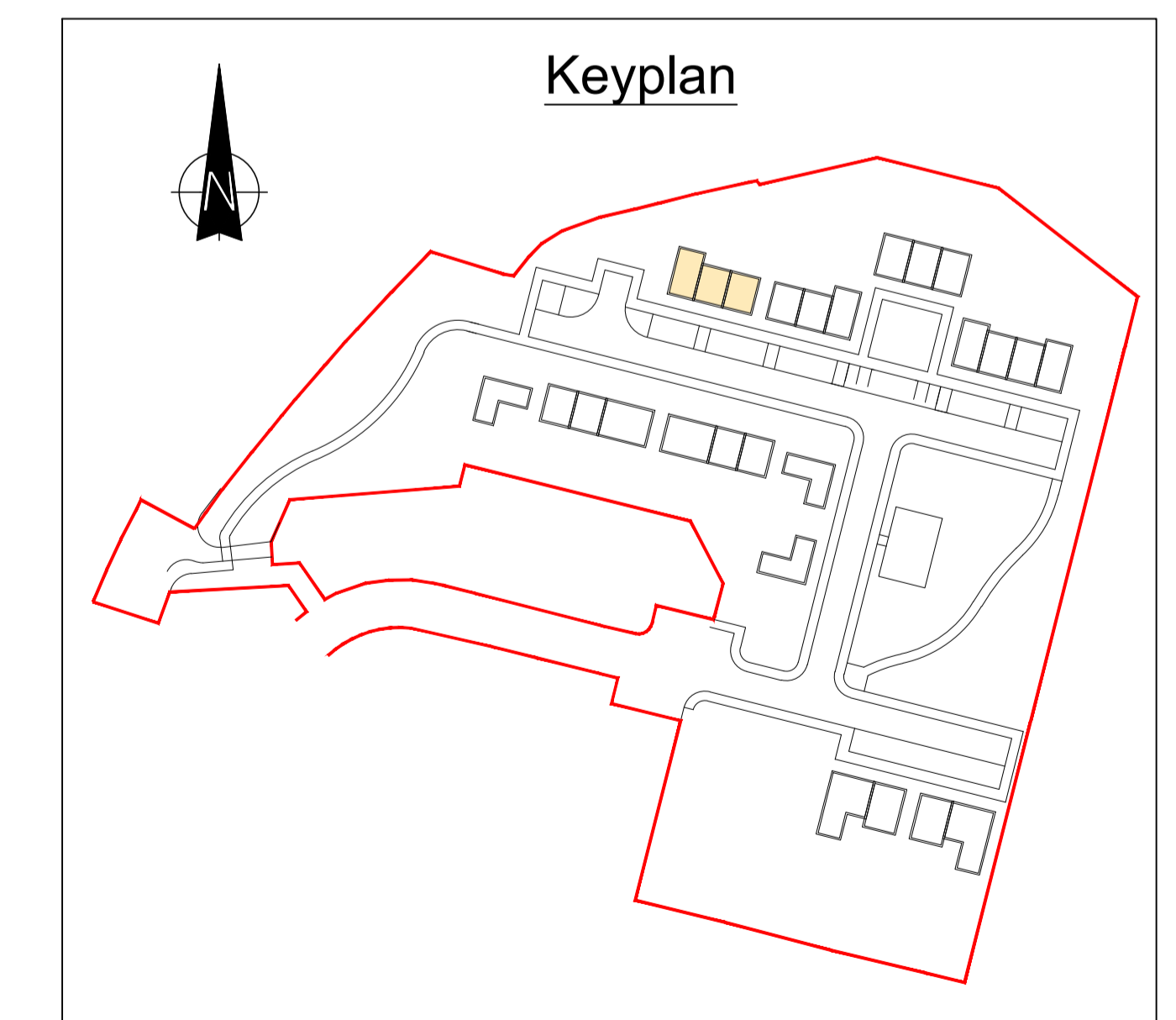
| | Target Gross Floor Areas (m ²) | Min-Main Living Room (m ²) | Aggregate Living Area (m ²) | Aggregate Bedroom Area (m ²) | Storage (m ²) |
|----------|--|--|---|--|---------------------------|
| Required | 80 sqm | 13 sqm | 30sqm | 25 sqm | 4 sqm |
| Provided | 87sqm | 13.1 sqm | 30.7sqm | 24.8 sqm | 6.0 sqm |

3 Bedroom / 5 Person (2 Storey) Widths:

| | Single Bedroom (m) | Double Bedroom (m) | Living Rm [1 Bed] (m) | Living Rm [2 Bed] (m) | Living Rm [3 Bed] (m) |
|----------|--------------------|--------------------|-----------------------|-----------------------|-----------------------|
| Required | 2.1m | 2.8m | 3.3m | 3.6m | 3.8m |
| Provided | - | 3.1 m | - | 3.6 m | - |

External Finishes Schedule

| | |
|-------------------|---|
| Roof: | Blue/Black Fibre cement Slate Dry Verge Finish. |
| Walls: | White External Render - Smooth/dashed Brick detail at Entrances |
| Windows & Doors: | Grey AluClad/uPVC |
| Rain Water Goods: | Black uPVC |



ARCHITECTS OFFICE
HOUSING, CORPORATE & CULTURAL SERVICES
THREE RIVERS CENTRE, LIFFORD, CO. DONEGAL
TEL..(074)91 53900 - FAX..(074)91 72812
WEB.. www.donegalcoco.ie
EMAIL.. info@donegalcoco.ie

NOTES

| REVISION | DATE | DESCRIPTION | BY |
|----------|------|-------------|----|
| - | - | - | - |
| - | - | - | - |
| - | - | - | - |
| - | - | - | - |
| - | - | - | - |
| - | - | - | - |

DRAWING
Site No. 46, 47 & 48
House Type (3 -2B/5P) & (27 - 3B/6P)
Plans, Elevations & Sections.
SCALE 1:100 @A1 DRAWN NMG CHECKED CB DATE Jan-'24
PROJECT NO. DRAWING NO. REVISION
HCS 0319 PL-103 -

PROJECT NAME & LOCATION
Cois Abhainn (Phase 3),
St. Johnston,
Co. Donegal
DRAWING STATUS
Part 8 Planning App.



Do not scale this drawing. All dimensions in millimetres. Written dimensions to be checked on site. Electronic issue to be confirmed by paper copy only.